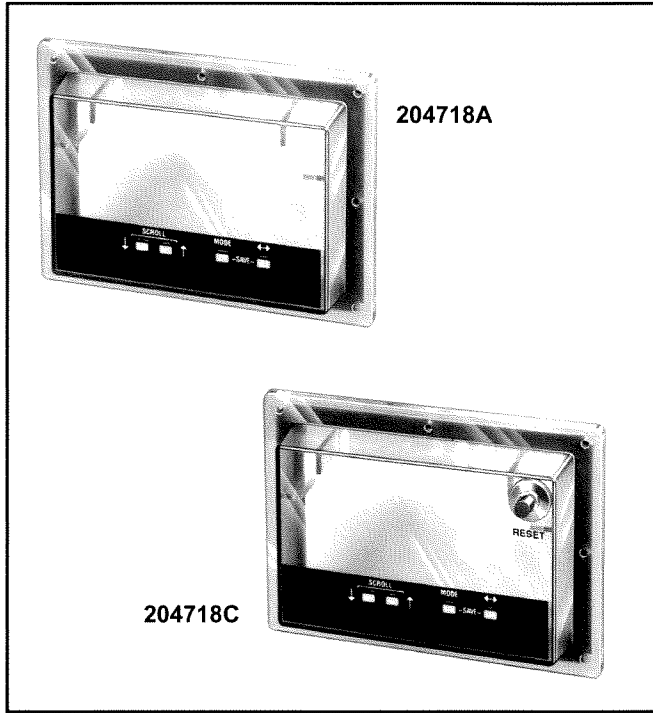


# 204718A,C Cover Assembly for S7800 Keyboard Display Module

PRODUCT DATA



## INSTALLATION

### When Installing This Product...

1. Read these instructions carefully. Failure to follow them could damage the control or cause a hazardous condition.
2. Check the ratings in the instructions and on the control to make sure the control is suitable for your application.
3. Installer must be a trained, experienced Flame Safeguard service technician.
4. After installation is complete, check out control operation as provided in these instructions.

### **⚠** WARNING

**Electrical Shock Hazard.**  
Can cause severe injury, death or property damage.

Disconnect power supply before beginning installation to prevent electrical shock and equipment damage. More than one disconnect may be involved.

When the S7800 Keyboard Display Module is already mounted on a panel, place the 204718A,C Cover Assembly over it and mark or drill starter holes for No. 6 by 1/2 in. sheet metal screws or use full-sized template as shown in Fig. 2.

When the S7800 Keyboard Display Module is to be mounted on a panel, position the S7800 in the desired location and mark and cut an opening for the S7800 connector cable. Then place the 204718 Cover Assembly over it and mark or drill starter holes for No. 6 by 1/2 in. sheet metal screws or use a full-sized template as shown in Fig. 2.

To install the S7800 in the 204718A,C NEMA 4 Cover Assembly, proceed as follows:

## APPLICATION

The 204718A NEMA 4 Cover Assembly (provides NEMA 4 protection for the S7800 Keyboard Display Module when the S7800 is mounted on a suitable panel).

The 204718C NEMA 4 Cover Assembly (provides NEMA 4 protection for the S7800 Keyboard Display Module when the S7800 is mounted on a suitable panel) and also provides reset of the 7800 Series device.

### Contents

Application .....	1
Installation .....	1
Ordering Information .....	2



65-0151-3

*June 2*  
*John*  
*204718A,C*  
*add New Part # and View*  
*1 drawing*  
*Low told Sandy a new photo not needed*  
*#2*  
*Low Ziller*  
*Current Stock*  
*3/6. 36756*  
*No. 6 by 1/2 in. sheet metal screws*  
*PDF*

1. Disconnect power supply to prevent electrical shock and/or equipment damage.
2. Place the tabs on the bottom of the S7800 Keyboard Display Module into the slots below the scroll panel on the cover. See Fig. 1.
3. Push the S7800 down into the slots while moving the top of the S7800 forward. The S7800 will snap into place at the top of the cover.
4. Connect the S7800 Keyboard Display Module to the system using the 203541 5-Wire Connector provided, following the installation procedure of the S7800 Keyboard Display Module
5. Position the cover over the panel and secure with eight No. 6 x 1/2 in. sheet metal screws (obtained locally). For the 204718A,C NEMA 4 Cover Assembly, tighten the screws so that the cover assembly is flush with the panel. This compresses the gasket and forms a NEMA 4 seal.
6. Restore power and perform checkout of the S7800 Keyboard Display Module as described in the applicable specification(s).

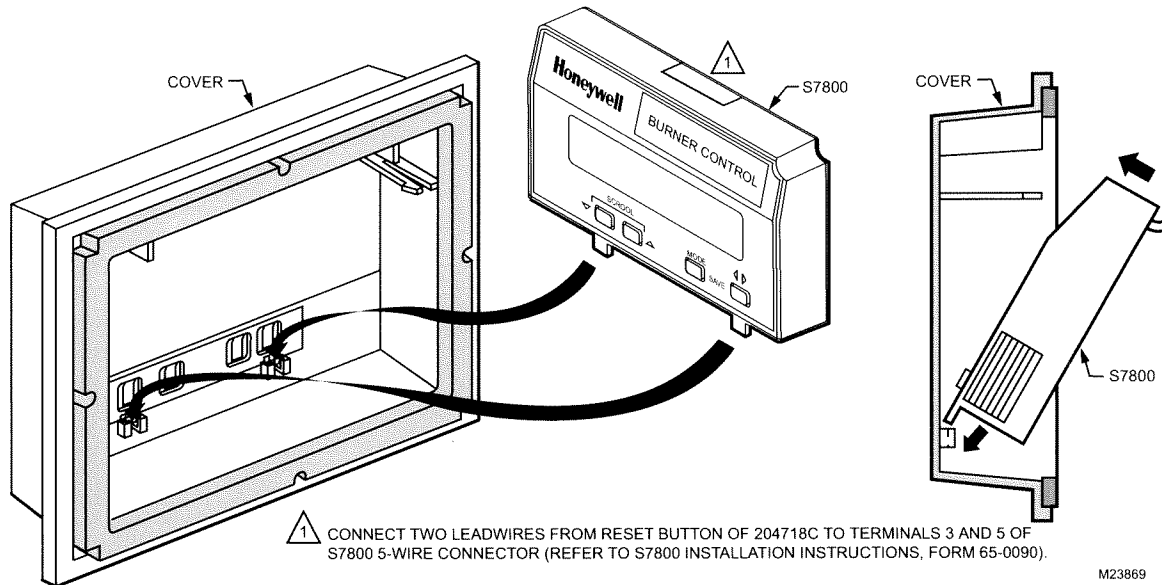


Fig. 1. Installing S7800 Keyboard Display Module in 204718 Cover Assembly.

## ORDERING INFORMATION

When purchasing replacement and modernization products from your TRADELINE® wholesaler or distributor, refer to the TRADELINE® Catalog or price sheets for complete ordering number.

If you have additional questions, need further information, or would like to comment on our products or services, please write or phone:

1. Your local Honeywell Automation and Control Products Sales Office (check white pages of your phone directory).
2. Honeywell Customer Care  
1885 Douglas Drive North  
Minneapolis, Minnesota 55422-4386

In Canada—Honeywell Limited/Honeywell Limitée, 35 Dynamic Drive, Toronto, Ontario M1V 4Z9.

International Sales and Service Offices in all principal cities of the world. Manufacturing in Australia, Canada, Finland, France, Germany, Japan, Mexico, Netherlands, Spain, Taiwan, United Kingdom, U.S.A.

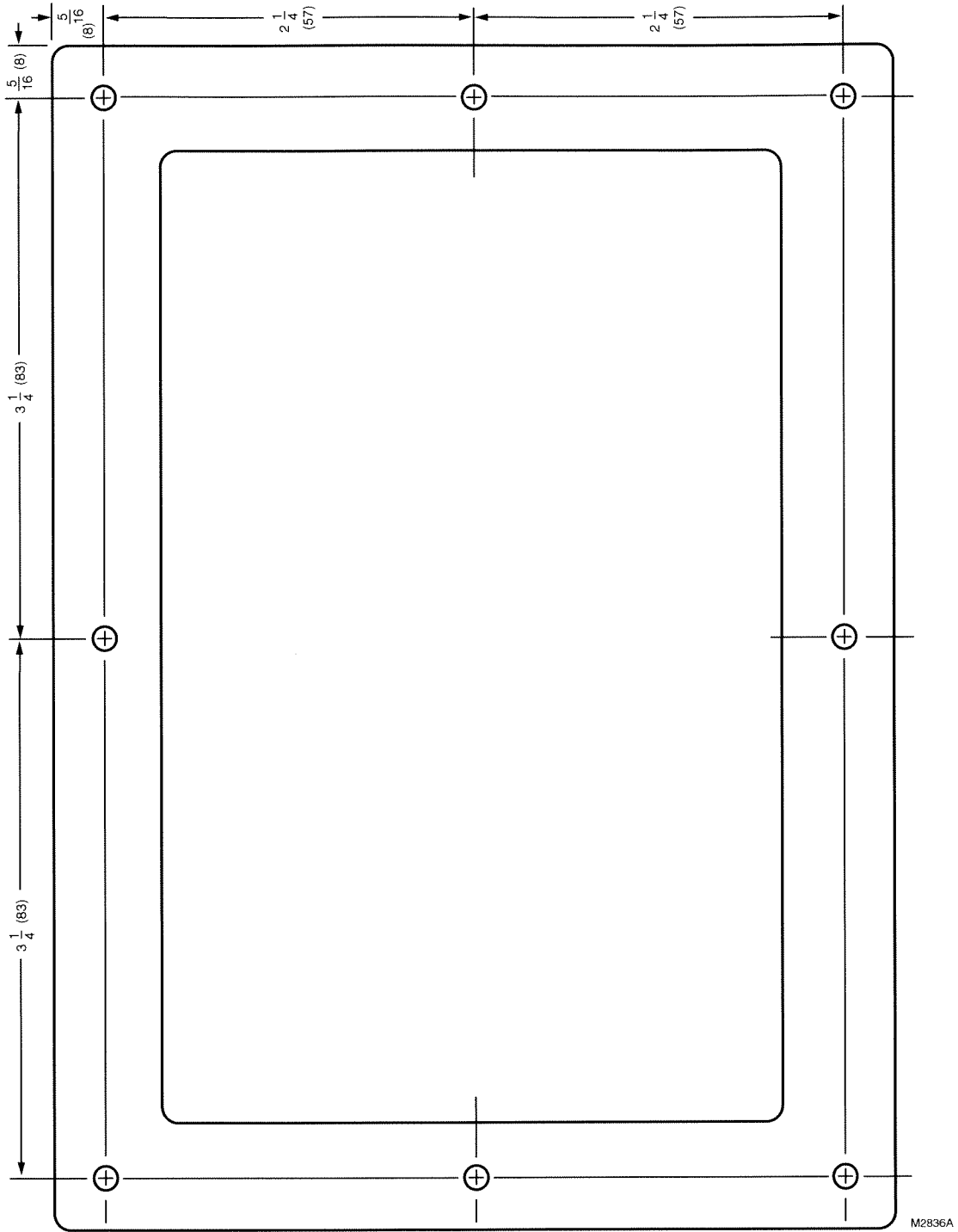


Fig. 2. Full-sized mounting template for 204718 Cover Assembly in in. (mm).

**Automation and Control Solutions**

Honeywell International Inc.  
1985 Douglas Drive North  
Golden Valley, MN 55422  
customer.honeywell.com

Honeywell Limited-Honeywell Limitée  
35 Dynamic Drive  
Toronto, Ontario M1V 4Z9

© U.S. Registered Trademark  
© 2007 Honeywell International Inc.  
65-0151—3 M.S. Rev. 03-07



Printed in U.S.A. on recycled  
paper containing at least 10%  
post-consumer paper fibers.

**Honeywell**